

APPLICATION NOTE PA60EU

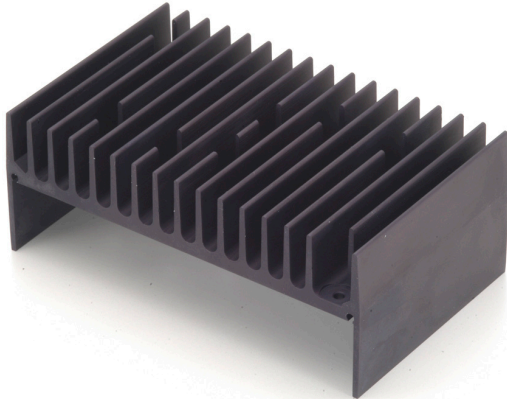
EVALUATION KIT

Fast, easy breadboarding of circuits using the PA60EU are possible with the EK26 PC board. Mounting holes are provided and the provision for standard banana jacks simplifies connection and testing. The amplifier may be mounted horizontally or vertically. Components are labeled on both sides of the board for ease in probing. A multitude of circuit configurations are possible, so only several component locations have specific functions and will usually be necessary:

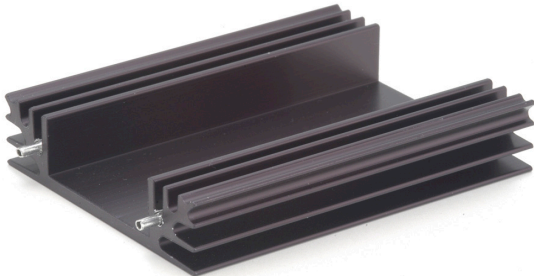
HEATSINKS

Many heatsinks can be used with this amplifier if holes are drilled and deburred. Requirements for the potential heatsink or chassis member are flatness of 2 mils per inch in an area large enough to fit the package.

The following heatsinks are compatible with this amplifier. Thermal ratings are for optimum mounting in free air.



HS20 1.3°C/W

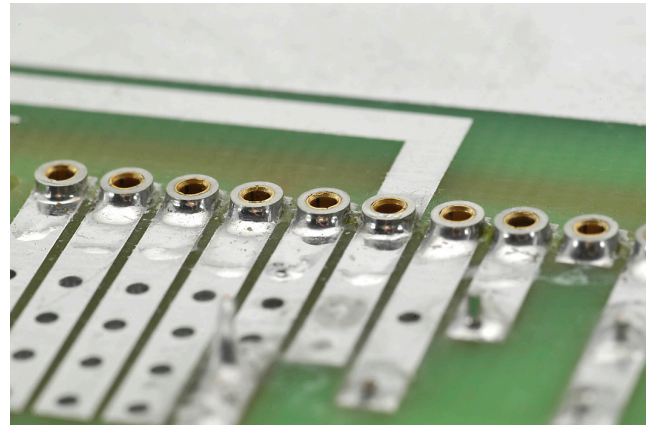


HS27 5.3°C/W

CAGE JACKS

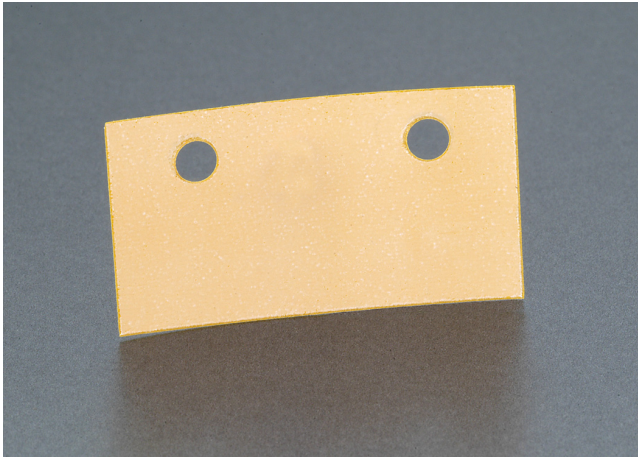


MS11



Part number MS11 consists of 15 cage Jacks.

THERMAL WASHER

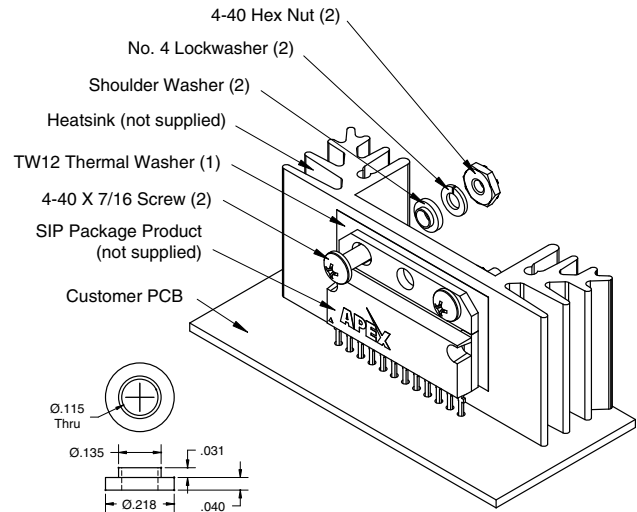


TW12

NOTES:

1. Base material is aluminum, 0.002" thick. Do not allow the washer to touch pins of the amplifier.
2. For optimum thermal transfer, avoid abrasive handling of washers which can damage their 0.5mil thick layer of thermal compound with which each side is coated.
3. The dry thermal compound will flow filling header to heatsink voids as soon as the material reached 60°C.
4. Do not store unused thermal washers above 40°C.
5. A new washer must be used for each mounting.
6. Part number TW12 consists of a package of 10 washers.
7. Thermal resistance is 0.2°C/W.

HARDWARE KIT



Shoulder Washer Dimensions

Keystone Part No. 3049
Nylon 6/6 per ASTM D4066

HK26